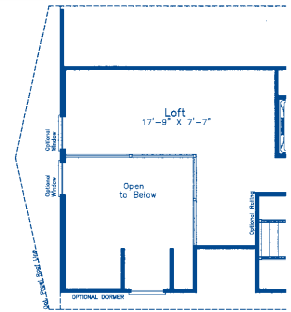
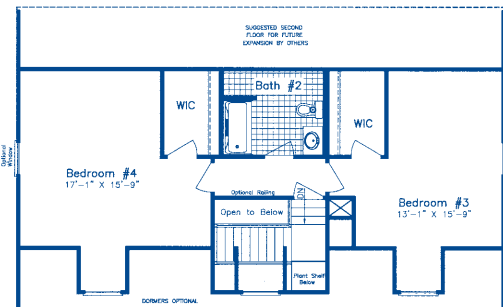


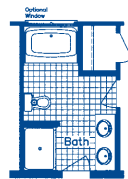
STANDARD UNFINISHED ATTIC SPACE
OPTIONAL 4-BOX CAPE



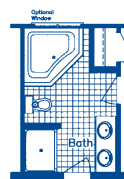
STANDARD CAPE
OPTIONAL 2ND FLOOR LOFT



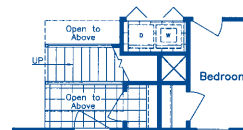
STANDARD UNFINISHED ATTIC SPACE
OPTIONAL 4-BOX CAPE



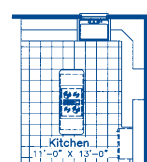
OPTIONAL 1ST FLOOR BATH #1



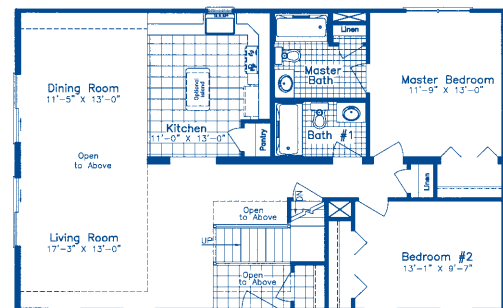
OPTIONAL 1ST FLOOR BATH #2



CRAWL SPACE WASHER/DRYER OPTION



OPTIONAL KITCHEN w/ COOKTOP



STANDARD BASEMENT PLAN

BRIDGEPORT (TRADITIONAL)

Approx. First Floor Area 1205 sq. ft.
Approx. Unfinished Attic Space 680 sq. ft.
Approx. Open Area 90 sq. ft.
Approx. Total Area 1975 sq. ft.

Approx. Overall Dimensions
27'-4" x 44'-0"

BRIDGEPORT (CONTEMPORARY)

Approx. First Floor Area 1205 sq. ft.
Approx. Unfinished Attic Space 480 sq. ft.
Approx. Open Area 390 sq. ft.
Approx. Total Area 2075 sq. ft.

Approx. Overall Dimensions
27'-4" x 44'-0"

Independent Builders are not affiliated with North American Housing Corp.

Frederick
5724 Industry Lane
Frederick, MD 21704
301-694-9100

Boones Mill
P.O. Box 25
Boones Mill, VA 24065
540-334-5000

Visit us on the
World Wide Web!
<http://www.northamericanhousing.com>



**North American
Housing Corp.**

PROGRESS IN LIVING